

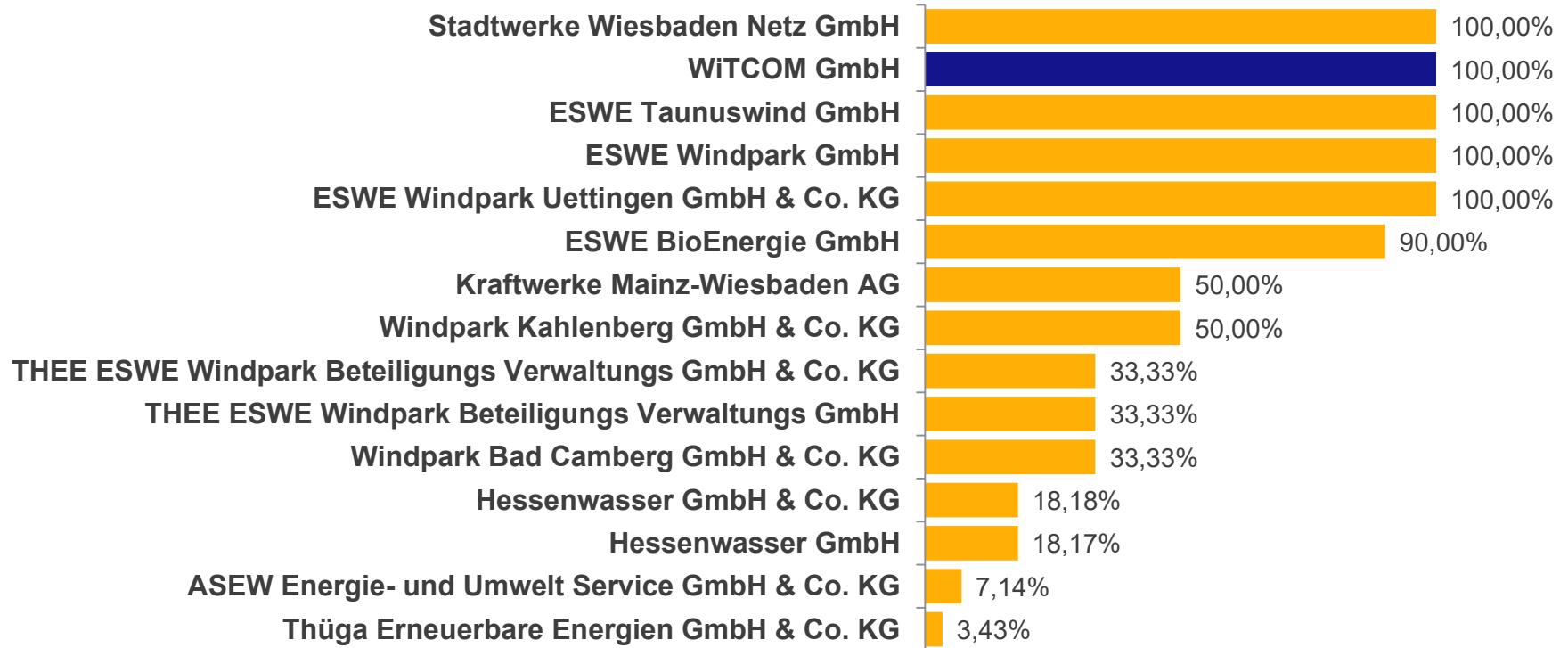


WITCOM GMBH

COMPANY

- Member of **ESWE** Versorgung (municipal utility provider Wiesbaden)
- Since 1997 successful on the market
- IT and telecommunication services for business customers, network operators and public authorities
- Three own datacenter with more than 1000 m² of space and emergency workstations with 400 m² of space
- International presence through collocation areas and internet nodes
- 36 employees

INTEGRATION WiTCOM TO ESWE



WiTCOM TIMELINE

1997	●	Foundation with liberalization of the telecommunication market
2002	●	First positiv annual result
2003	●	Status as Internet Service Provider
2006	●	Operation high-speed-ring Wiesbaden - Frankfurt
2008	●	Tapping at Rheingau and Taunusstein
2009	●	Operation Datacenter Konrad-Adenauer-Ring
2012	●	Tapping at Mainz and Hochheim
2019	●	Subterranean crossing Rhein to Bingen

NETWORK INFRASTRUCTURE

- 650 km Fibre optic cable
- 1.100 km Copper cable
- 100G based redundant Carrier Ethernet Backbone
- High-available Internet POP
- Grid coupling at Europe largest Internet exchange point (DE-CIX)



NETWORK INFRASTRUCTURE

- Peer-to-peer connection with the most important Cloud-plattformen (Amazon Web Services, Google Microsoft)
- Digital radio network for operator with critical infrastructure
- LoRa WAN radio network for IoT applications

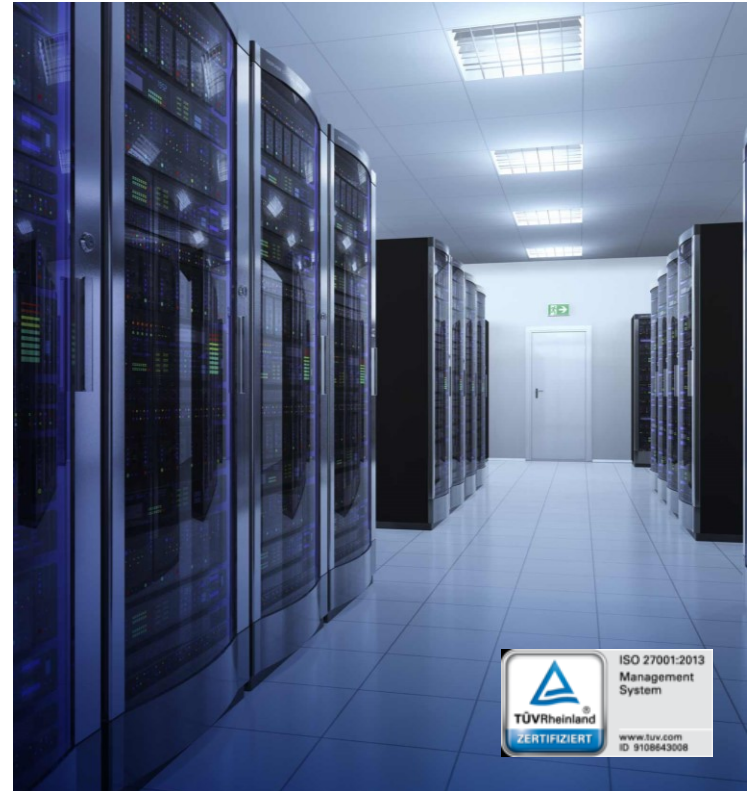


NETZINFRASTRUKTUR



WiTCOM DATACENTER

- DC1
 - 400 m² storage space
 - TÜV-certificate
 - Operates with nature electricity
 - International TIER III – Standard ca. 1.600 watts per m² cooling capability
 - Redundant LWL-connection
- DC2
 - 350 m² storage space
 - TÜV-certificate
 - Operates with nature electricity
 - Cooling capability with 600 watts per m²



PRODUKTPORTFOLIO

INTERNET

SITE NETWORKING

DATACENTER

PHONE



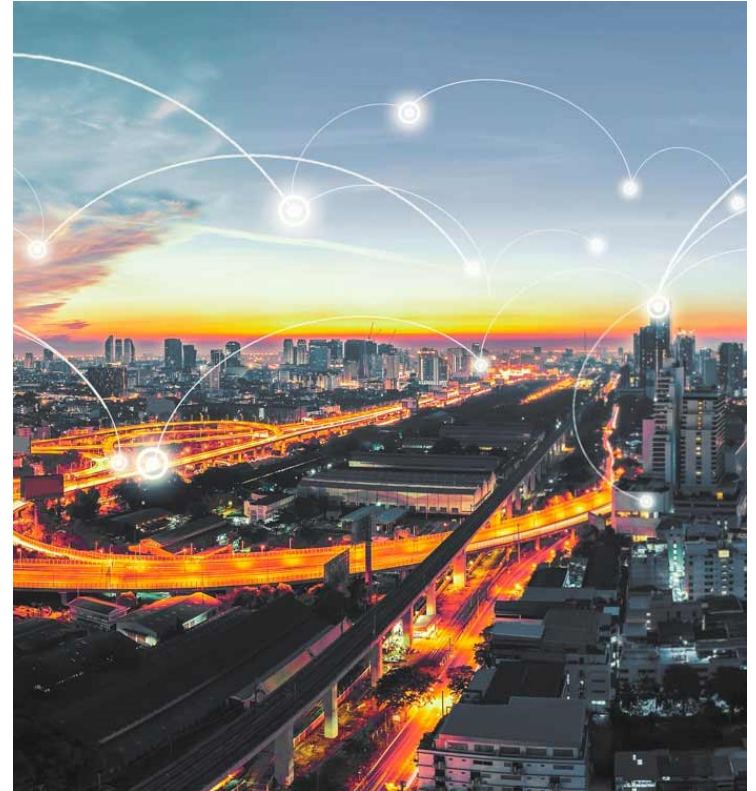
INTERNET

- **Internet access**
guaranteed bandwidths up to 10 Gbit's
- **Managed Firewall**
Next-Generation Firewall
- **E-Mail Security**
high-quality detection – More than 98,5% of spam-e-mails are blocked.
- **Domain Services**
over 350 country-code like .de or .it and over 600 new generic top-level-domains like .shop or .gmbh



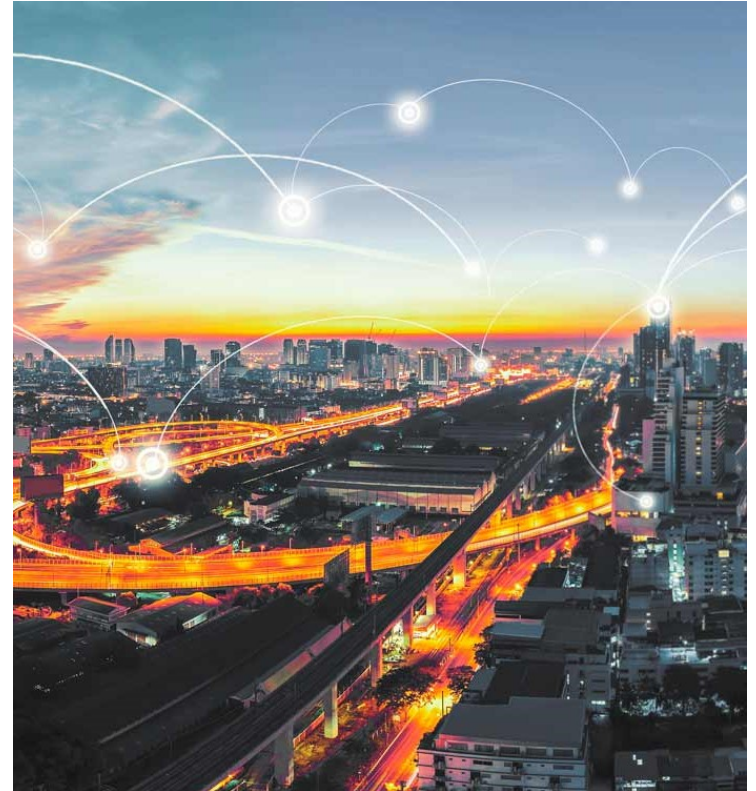
SITE NETWORKING

- **Ethernet Link**
bandwidth from 2,5 Mbit/s up to 100 Gbit/s
- **Fibre Channel Link**
serial and continuous high-speed transmission of large amounts of data
- **Cloud Link**
your individual, secure and dedicated multi-cloud connection



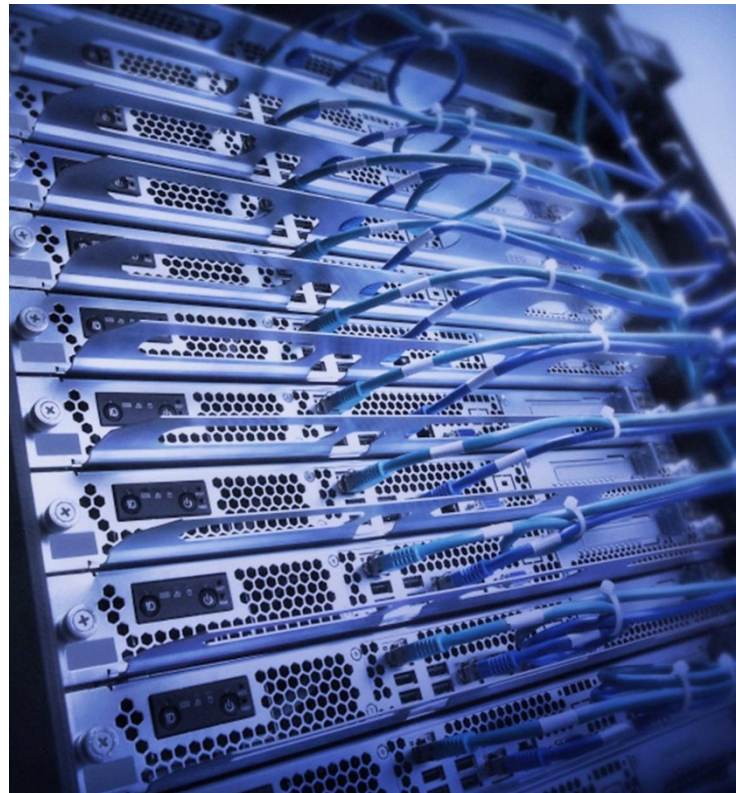
SITE NETWORKING

- Link fixed connection
SDH based connection
- MPLS VPN
own corporate network for all voice, data and video applications
- Smart City Link (LoRa WAN)
networking of end devices, such as sensors, actuators or IoT components



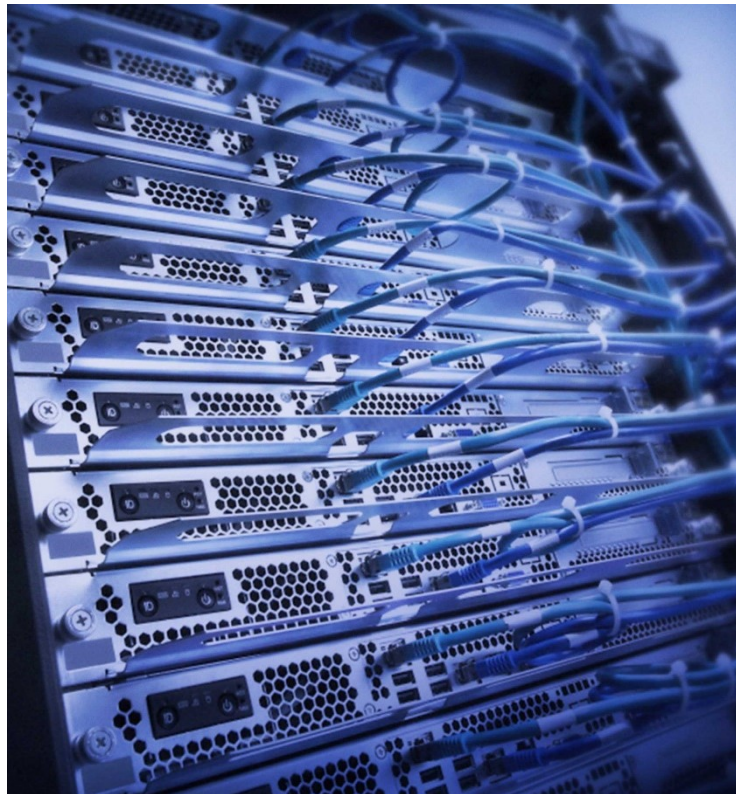
DATACENTER

- **Serverhousing**
from the rack for your single server to the cage for entire server or computer cabinets
- **Emergency workstations**
continuation of business functions in familiar IT environment
- **Virtual Datacenter**
the next generation scalable datacenter! Virtual resources in form of CPU power, RAM and hard disk capacity



DATACENTER

- **Sync&Share**
WiTCOM's new enterprise file Sync&Share solution enables the rapid exchange of large data using encrypted transmission
- **Simple Storage**
the easy, simple, scalable, fast and affordable storage for your data
- **Backup&Restore**
consistent data protection concept for servers, desktops and mobile users



PHONE

- **SIP Trunk**
your digital telephone connection of the future
- **Hosted VoIP**
the cloud-based telecommunication system
from the WiTCOM network
- **Company radio**
the digital company radio in Wiesbaden



THANK YOU

WITCOM 
Digital. Vernetzt.